

Cyclin B1

Catalog Number: 21210

Gene Symbol: CCNB1, CCNB

Description: Anti-Cyclin B1 Rabbit Polyclonal Antibody

Background: Cyclin B1 is a regulatory protein belongs to the cyclin family and involved in mitosis. Upon activation, cyclin B1 form a complex with Cdk1. Cyclin B1-Cdk1 complex is involved in the early events of mitosis such as chromosome condensation, nuclear envelope breakdown, and spindle pole assembly. Since cyclin B levels are often de-regulated in tumors, it is tested as a biomarker through immunohistological analysis for target therapy and prognosis.

Immunogen: A synthetic peptide derived from the internal region of cyclin B1, human origin.

Tested applications: ELISA, WB

Recommended dilutions:

ELISA: 1:1000-1:5000

WB: 1:1000-1:2000

IHC: 1:50-1:500

Concentration: 1 mg/ml

Host: Rabbit

Clonality: Polyclonal

Purity: Purified from serum

Format: Liquid

Preservative: no

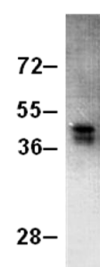
Constituents: PBS (without Mg²⁺ and Ca²⁺), pH 7.4, 150 mM NaCl, 50% glycerol

Species Reactivity: Recognizes Cyclin B1 of vertebrates.

Storage Conditions: Store at -20°C. Avoid freeze / thaw cycles.

Western blot:

cyclin B1 protein



WB:Anti-cyclin B1 pAb

Western blot analysis of recombinant Cyclin B1 protein. Purified His-tagged Cyclin B1 protein was blotted with the anti-Cyclin B1 rabbit polyclonal antibody (Cat. #21210).

For research use only. Not for diagnostic or therapeutic applications.