

Product Name: RalB Protein

Synonyms: v-ral simian leukemia viral oncogene homolog B

Catalogue Number: 10169

Source: Human, recombinant full length, His₆-tag

Expression Host: E. coli

Molecular Weight: 23 kDa

Purity: >95% by SDS-PAGE

Introduction: The Ras-like small G proteins, RalA/B, are important components of Ras signaling pathways, implicated in the initiation and maintenance of tumorigenic transformation, as well as vesicle transport, apoptosis, transcription, cell migration, and cell proliferation.

Amino Acid Sequence (1-206)

MAANKSKGQSSSLALHKVIMVGGVGVGKSALTLQFMYDE
FVEDYEPTKADSYRKKVVLVDGEEVQIDILDLAGQEDYA
AIRDNYFRSGEGFLLVFSITEHESFTATAEFREQILRV
KAEEDKIPLLVGNKSDLEERRQVPVEEARSKAEEWGV
QYVETSATKTRANVDKVFDFLMREIRTKKMSENKDKNGK
KSSKNKKSFKERCCLL

Properties

Physical Appearance (form): Lyophilized Powder
from 20 mM Tris-HCl, pH 7.4, containing 100 mM NaCl.

Physical Appearance (color): White

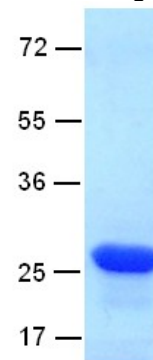
Solubility (Color): colorless

Solubility (Turbidity): clear, 10 mg/mL H₂O

Storage: -80°C

Preparation Instructions

Centrifuge the vial before open the cap and reconstitute in water. Adding of 10 mM β-mercaptoethanol or 1 mM DTT into the solution to protect the protein is recommended and using of non-ionic detergents such as n-Dodecyl β-D-maltoside (DoDM) or polyethylene detergents (e.g. C₁₂E₁₀) also help to stabilize the protein. Avoid repeated freezing and thawing after reconstitution.



References

1. Chien, Y. et al., Cell 127: 157-170, 2006.
2. Hsieh, C.-L. et al., Somat. Cell Molec. Genet. 16: 407-410, 1990

For research use only. Not for diagnostic or therapeutic applications.